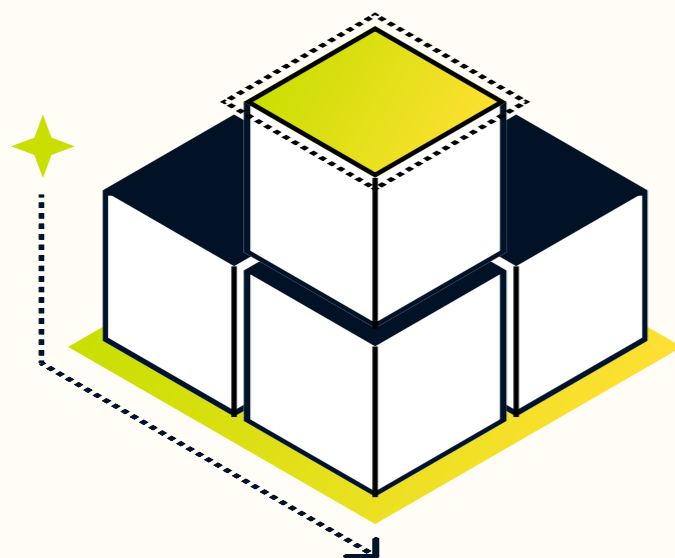


# ServiceNow SPM + INRY, a Cprime Company Orchestrating Strategy Into Impact

**Strategic Portfolio Management (SPM)** connects strategy to execution, aligning goals, funding, people, and processes to deliver measurable impact. Paired with our transformation consulting and seamless ServiceNow implementation, it becomes a powerful catalyst for lasting change.

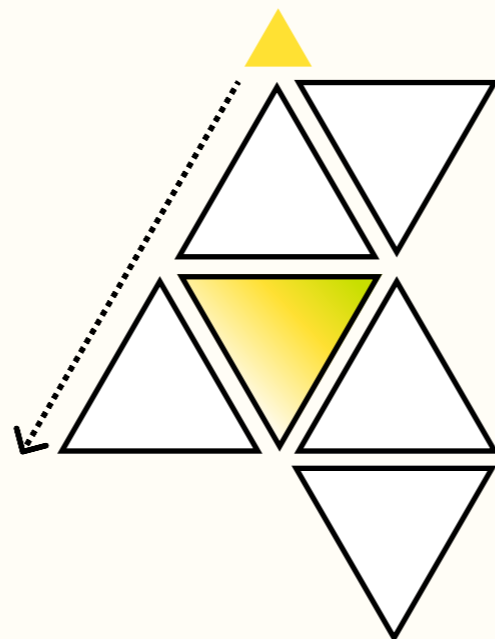
**1**

Solid  
Foundation



**2**

Strategic  
Synergy



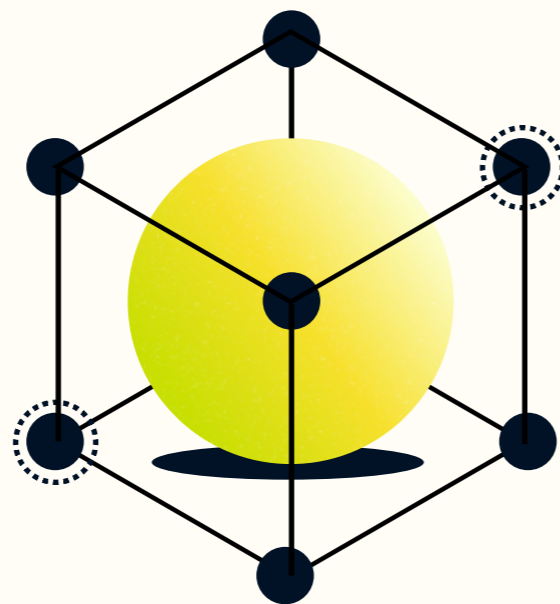
**3**

Portfolio  
Synchronization



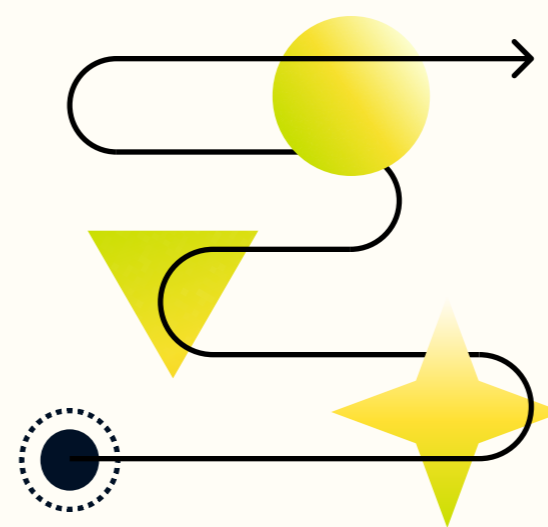
**4**

Adaptable  
Innovation



**5**

Continuous  
Evolution



## Our Partnership

Together, ServiceNow SPM and INRY, a Cprime Company integrate consulting, coaching, and enterprise architecture expertise. The result? Organizations align strategy with execution, invest in the right priorities, and scale with confidence.

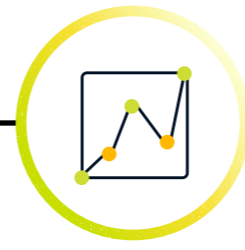
# An Outcome-Led Approach

Our six-pillared approach to SPM guides you to strategic portfolio excellence:



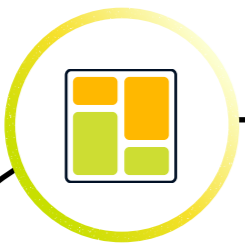
## STRATEGIC ALIGNMENT:

Initiatives directly advance enterprise goals.



## RISK MITIGATION:

AI-driven insights and proactive safeguards secure results.



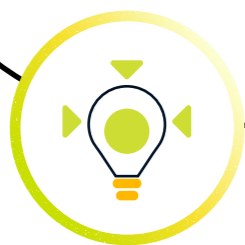
## ADAPTABILITY & AGILITY:

Adapt quickly to evolving customer and market needs.



## INVESTMENT ALLOCATION:

Capital flows to initiatives with the greatest ROI.



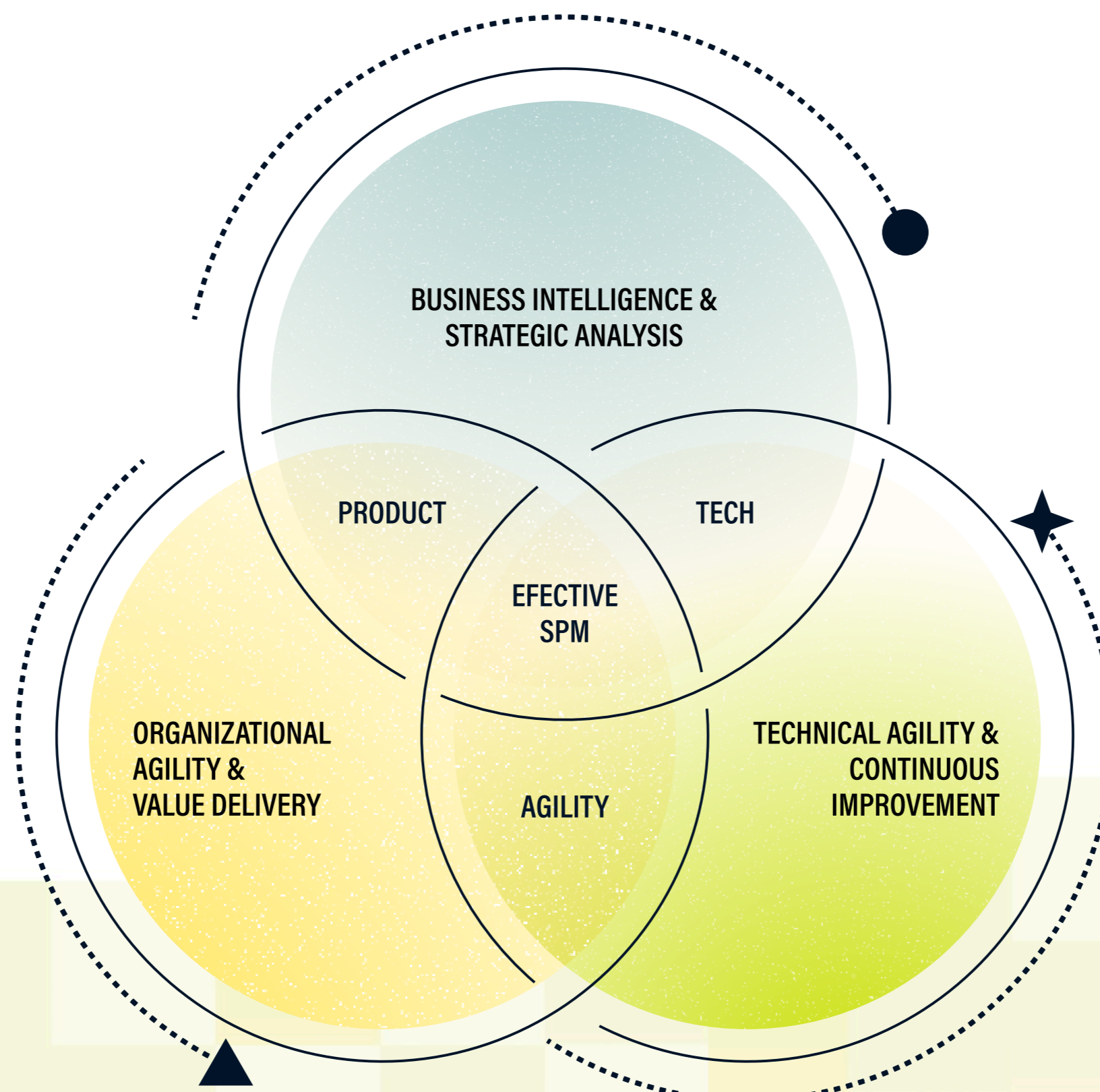
## COLLABORATION:

Transparency and engagement unify teams and stakeholders.



## DECISION-MAKING:

Real-time data and predictive intelligence enable confident choices.

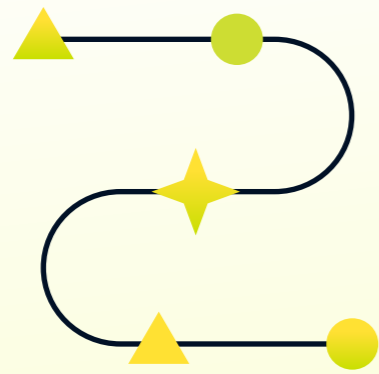


# See It in Action

Real-world transformations powered by ServiceNow SPM + INRY:

## Innovation and operational efficiency at scale

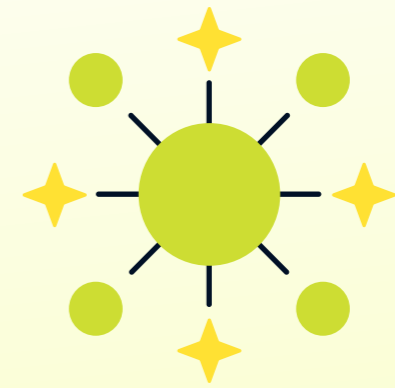
Enhanced strategic alignment and efficiency



Agility powered by real-time insights



Cultural shift and long-term partnership



[READ MORE HERE](#)



**Wellstar**

A unified SPM system that accelerated delivery and reduced cost

19%

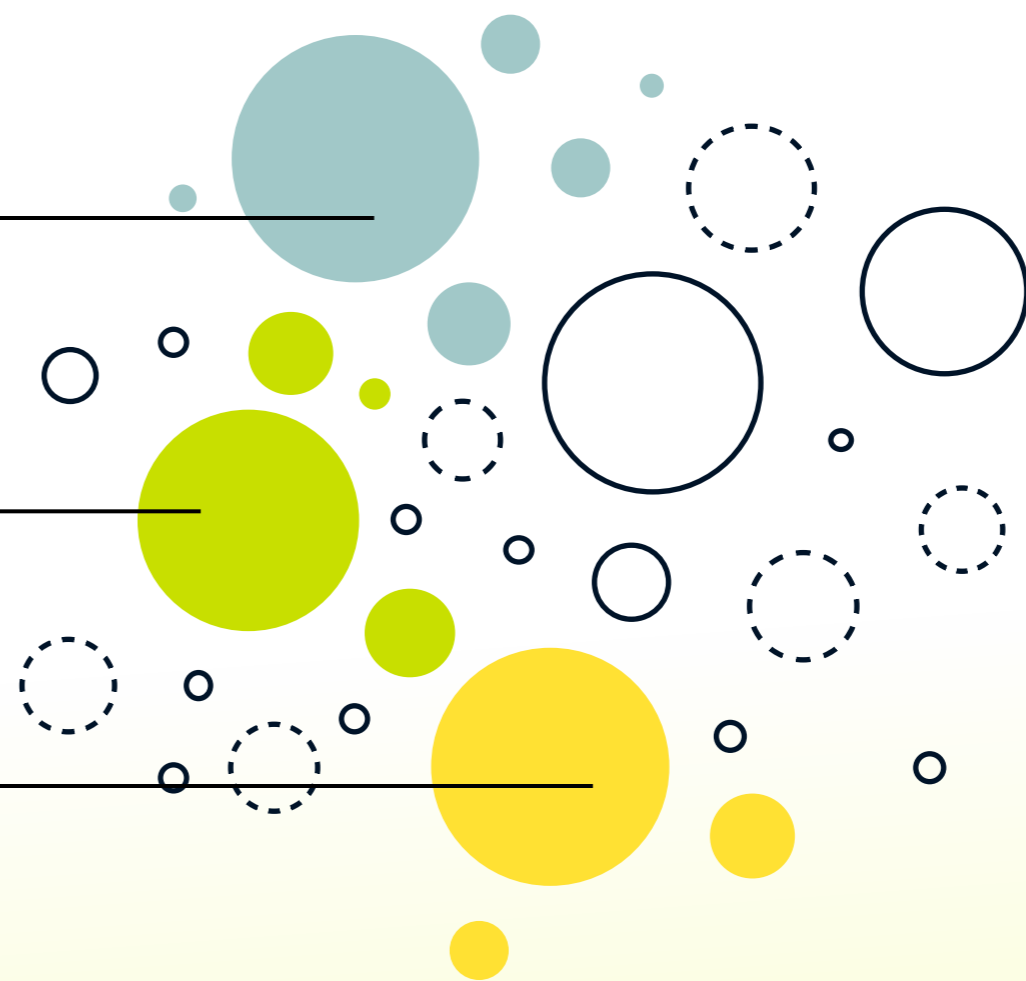
**BOOST IN PROJECT SUCCESS RATE**

17%

**FASTER PROJECT COMPLETION**

16%

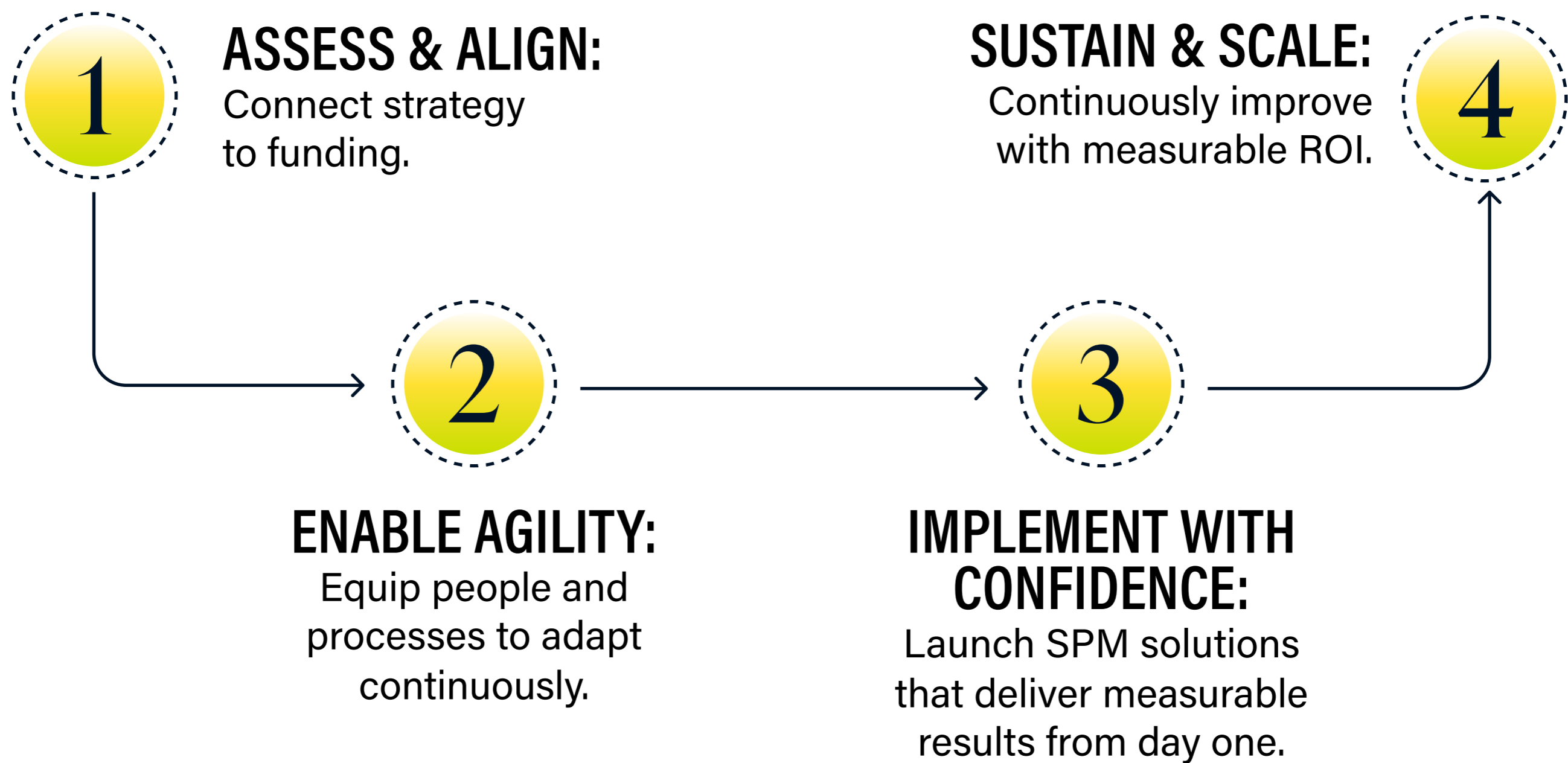
**FEWER BUDGET OVERRUNS**



[READ MORE HERE](#)

# Your Transformation Journey

Every lasting transformation begins with a clear path forward. These are the steps we follow:



## Take the Next Step

Achieve alignment and accelerate outcomes with ServiceNow SPM + INRY.

TALK TO AN EXPERT